

ORIGINAL RESEARCH PAPER

Comparison of Kaolin and chemical source for preparation of Nano pore NaA Zeolite membranes

*Mansoor Kazemimoghadam**

Malek Ashtar University of Technology, Faculty of Chemical and Chemical Engineering, Tehran, Iran

Received 2016-02-01

Accepted 2016-03-05

Published 2016-07-01

Abstract

Zeolite membranes have uniform and nano-sized pores, and they separate molecules based on differences in the molecules size and diffusion properties. Different routes used to prepare zeolite composite membranes include growing zeolite layers from gels on porous supports. Our approach to membrane synthesis was based on hydrothermally converting films of layered aluminosilicates into zeolite films. In this research, synthesis of nano NaA zeolite membrane from kaolin was investigated. In the first step, kaolin has been calcined at 700 °C to the metakaolinite phase. As a second step, the zeolitisation experiments have been carried out under hydrothermal conditions. The metakaolinite obtained has been reacted with NaOH solutions in autoclaves at 100°C. X-ray diffraction (XRD) patterns of the membranes exhibited peaks corresponding to the support and the zeolite. The morphology of the support and membrane subjected to crystallization was characterized by Scanning electron microscopy (SEM). Separation performance of the NaA membranes was evaluated using pervaporation of water–Ethanol mixtures. The membranes showed high water selectivity in the water–Ethanol mixtures.

Keywords: *Kaolin; Nano; Pervaporation; Synthesis; Zeolite*

How to cite this article

Kazemimoghadam M, Comparison of Kaolin and chemical source for preparation of Nano pore NaA Zeolite membranes. J. Water Environ. Nanotechnol., 2016; 1(1): 45-53, DOI: [10.7508/jwent.2016.01.006](https://doi.org/10.7508/jwent.2016.01.006)

INTRODUCTION

Zeolites are a family of hydrated alumina silicate minerals that contain alkali and alkaline earth metals. Zeolite molecular sieves are crystalline porous alumina silicate minerals whose unique pore and channel systems in the molecular size range are the basis of their important contribution in catalysis, separation and ion exchange. Zeolites are porous three dimensional alumina silicates formed by the sharing of oxygen atoms in the framework aluminum and silicon tetrahedral. In recent years, attempts to develop zeolite membranes for separation and catalytic applications have been intensified considering their molecular sieving properties, uniform nano pore size, high thermal resistance, chemical

inertness, and high mechanical strength. The investigation of nano zeolite membranes with nano pore size has attracted much attention. Zeolites are conventionally synthesized from sodium alumina silicate gel prepared from pure chemicals in air ovens or auto claves [1-3]. Using of the natural raw materials for the production of zeolites has economical advantage comparing the synthetic chemicals. The kaolin mineral with a Si/Al ratio 1 has conveniently been used as a raw material for the synthesis of low silica zeolites. Since the uses of zeolites in several branches of industry have been increasing, the production of zeolites by economical ways has gained great importance in material science. Zeolite NaA membrane were reported to be excellent materials

* Corresponding Author Email: mzkazemi@gmail.com

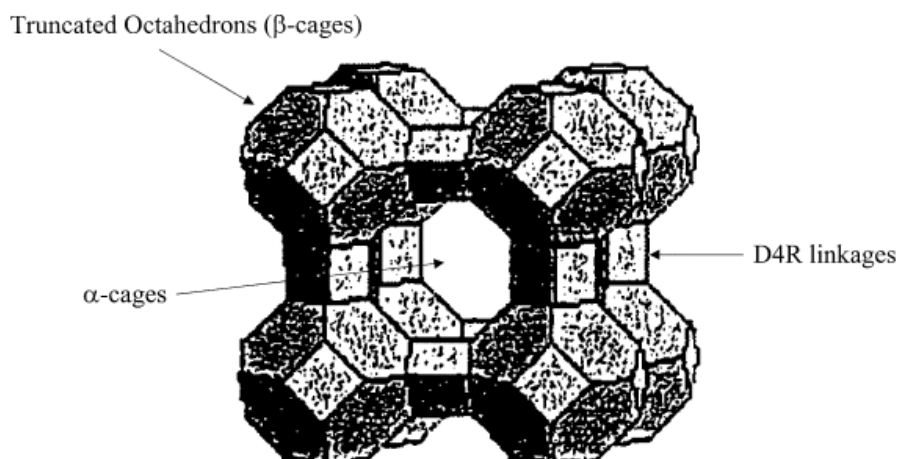


Fig. 1. Repeating unit of zeolite NaA

for solvent dehydration by Pervaporation (PV). The pore size of NaA zeolite is 0.4 nm, i.e., smaller than that of the MFI zeolite (0.55 nm). The small pore size of NaA zeolite makes the separation of small molecules by difference in size possible. Thus small molecules, such as H₂O (0.27 nm), are expected to be separated from ethanol by molecular sieving or configuration diffusion using NaA zeolite membranes [4-6].

In this paper, preparation method of the Nano pore NaA zeolite membranes using by kaolin on mullite support is reported. Performances of the membranes prepared by hydrothermal in situ crystallization were studied in separation of the water–Ethanol mixtures by PV.

ZEOLITE STRUCTURE AND TRANSPORT MECHANISMS

The hydrophilic membranes used in this research were composite zeolite NaA membranes. The membranes were made of an active NaA layer, deposited on a ceramic porous mullite support. The active NaA layer is responsible for high separation factors achieved in PV of Ethanol mixtures. The structure of zeolite NaA is shown in Fig. 1. As shown in Fig. 1, the aluminosilicate framework of zeolite NaA is generated by placing truncated octahedrons (b-cage) at eight corners of a cube and each edge of the cube is formed by joining two b-cages by a D4R linkage. Each b-cage encloses a cavity with a free diameter of 0.66 nm and each unit cell encloses a larger cavity (a-cage) enclosing a free diameter of 1.14 nm. There are two interconnecting, three-dimensional channels

in zeolite NaA: (i) connected a-cages, 1.14 nm in diameter, separated by 0.42 nm apertures, (ii) b-cages, alternating with a-cages separated by 0.22 nm apertures. Thus, molecules smaller than 0.42 nm in diameter can diffuse easily through the nanopores of the zeolite. In addition, position of sodium ions in unit cells is important since these ions act as the sites for water sorption and transport through the membrane. For a typical zeolite, a unit cell having the composition Na₁₂Al₁₂Si₁₂O₄₈·27H₂O, eight (out of 12) sodium ions are located inside an a-cage and four ions are located in b-cages. Transport of solvent species (mainly water) through the zeolite matrix comprises of three steps: (i) strong adsorption of the species into a cage from feed side, (ii) surface diffusion of the species from cage to cage and (iii) vaporization of the species to permeate side. Normally, any physical adsorption process includes both Vander Waals dispersion-repulsion forces and electrostatic forces comprising of polarization, dipole and quadrupole interactions. However, since the zeolites have an ionic structure, the electrostatic forces become very large in adsorption of polar molecules like H₂O. This effect is manifested in the fact that heat of adsorption of water into zeolitic adsorbents is unusually high (25–30 kcal/mole) [7].

ZEOLITE NAA SYNTHESIS FROM KAOLIN

The low silica zeolite NaA can be conveniently prepared by the hydrothermal reaction of the activated kaolinite with aqueous sodium hydroxide. The synthesis of low silica zeolites from

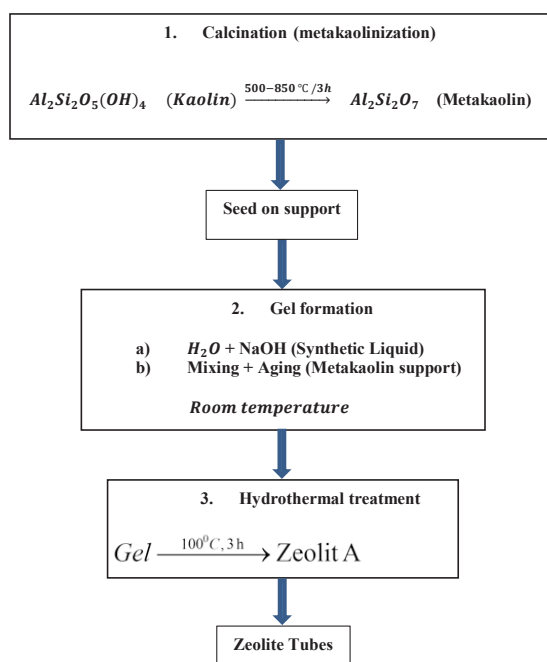


Fig. 2. Flow diagram for the studies parameters in the hydrothermal synthesis of Zeolite A from kaolin.

the kaolinite essentially consists of two steps:

(i) Thermal activation of the kaolinite in order to get metakaolinite,

(ii) Hydrothermal reaction of metakaolinite with various aqueous alkalis medium.

The activation process results in structural changes of the starting materials to promote their reactivity in the reactant solution for the direct transformation into zeolite from the constituent components [8].

CALCINATIONS OF KAOLIN TO METAKAOLIN

Kaolin $[\text{Al}_2\text{Si}_2\text{O}_5(\text{OH})_4]$ is a dioctahedral 1:1 layer alumina silicate with two kinds of interlayer surfaces. One surface is made of a gibbsite-type structure where each aluminum atom occupies the center of an octahedron with oxygen atoms and hydroxyl groups in the vertices. The other surface is made of a silica-type structure, where each silicon atom occupies the center of a tetrahedron with oxygen atoms in the vertices. Therefore, one side of the layer (gibbsite side) has hydroxyl groups whereas the other side of the layer (silica side) has oxygen atoms [9]. Metakaolin $(\text{Al}_2\text{O}_3 \cdot 2\text{SiO}_2)$, a calcined product of kaolin $(\text{Al}_2\text{O}_3 \cdot 2\text{SiO}_2 \cdot 2\text{H}_2\text{O})$ with Si/Al ratio 1 is a convenient starting material for the synthesis of zeolite A. The chemical analysis of the kaolin is listed in Table 1

The heat treatment of kaolin powders at 700 °C transforms them into metakaolin powders. Dehydration by thermal treatment converts kaolin to metakaolin, which is semi crystalline and much more reactive than the starting material:



EXPERIMENTAL

Support preparation

In ceramic membranes, thin dense layers are usually deposited over porous supports. The porous supports provide mechanical strength for the thin selective layers. Porous supports can be made from alumina, cordierite, mullite, silica, spinel, zirconia, other refractory oxides and various oxide mixtures, carbon, sintered metals and silicon carbide.

In this research, mullite supports have been prepared from kaolin clay. Kaolin is thermally converted to mullite via high temperature calcinations. The reaction takes place when kaolin is utilized as the sole source of silica and alumina. The reaction can be represented by the following equation:



Free silica (4SiO_2) is generated because of this conversion. The free silica has been leached out and then porous mullite bodies have been prepared. Mullite has several distinct advantages over other materials. Since kaolin is heated to high temperatures to achieve the mullite conversion reaction, strong inter-crystalline bonds between mullite crystals are formed and this results in excellent strength and attrition. Leaching time depends on several factors including:

- 1) the quantity of free silica to be removed,
- 2) the porosity of body prior to leaching,

Table 1. Analysis of kaolin clay

Component	Percent (%)	Phases	Percent (%)
SiO ₂	60.1	Kaolinite	89
TiO ₂	0.1		
Al ₂ O ₃	29.2	others	11
Fe ₂ O ₃	0.6		
K ₂ O	0.5		
Na ₂ O	0	Total	100
L.O.I	9.5		
Total	100		

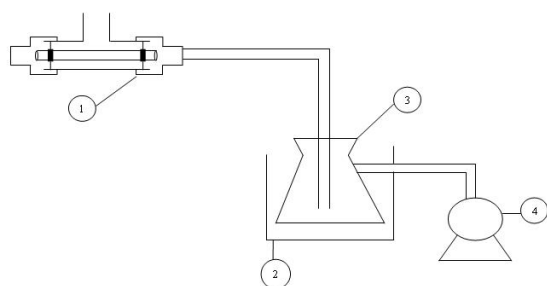


Fig. 3. PV setup (dead end; 1- feed container and PV cell 2- liquid nitrogen trap 3- permeate container 4- three stage vacuum pump)

- 3) the concentration of leaching solution and
- 4) temperature.

Kaolin (SL-KAD grade) has been supplied by WBB cooperation, England. Analysis of the kaolin is listed in Table 1.

Cylindrical shaped (tubular) bodies (ID: 10 mm, OD: 14 mm and L: 15 cm) have been conveniently made by extruding a mixture of about 75-67% kaolin and 25-33% distilled water. Suitable calcinations temperatures and periods are those at which kaolin converts to mullite and free silica. Good results have been achieved by calcining for about 3 h at temperatures of about 1250 °C [10-13].

Free silica has been removed from the calcined bodies after leaching by strong alkali solutions. Removal of the silica causes mesoporous tubular supports to be made with very high porosity. Free silica removal has been carried out using aqueous solutions containing 20% by weight NaOH at a temperature of 80 °C for 5 h. Supports have been rinsed using a lot of hot distilled water for a long time in order to remove the all remaining NaOH. Porosity of the supports before leaching is 24.3%, while after treatment it increases to 49%. Flux of the supports before and after free silica removal at 1 bar and 20 °C is 6 kg/m²h and 10 kg/m²h, respectively. Porosity of the supports has been measured by water absorption method.

Zeolite membrane synthesis

The zeolites NaA synthesized by two different Routes. The synthesis from chemical source and kaolin source.

Coating of the support with seeds

Adding seed crystals to this crystallization system has resulted in increased crystallization rate. The enhanced rate might be due to simply increasing the rate at which solute is integrated

into the solid phase from solution due to the increased available surface area, but also might be the result of enhanced nucleation of new crystals. The secondary nucleation mechanism referred to as initial breeding results from microcrystalline dust being washed off seed crystal surfaces in a new synthesis batch. These microcrystalline fragments grow to observable sizes, and result in greatly enhanced crystallization rates due to the significantly increased crystal surface area compared to the unseeded system. Consequently, it is to be expected that addition of seed crystals to a synthesis system will introduce sub-micron sized crystallites into the system that will serve as nuclei.

Porous mullite tubes as describe above have been used as supports. External surface of the supports have been polished with 600 grit-sand papers and then they have been washed and cleaned in boiling distilled water for 5 min to remove loose particles created during polishing. Then, the supports have been dried at 100 °C for 3h in air. In order to coat a thin and uniform zeolite membrane layer over the mullite support, nucleation seeds should be small and uniform in size. To inhibit formation of the zeolites into the support pores, the seeds should not be too small to penetrate into the pores. High purity nucleation seeds (2 μm in size) have been synthesized by hydrothermal method. The seeds should be dispersed homogeneously over the support surface and the amount of seeds should not be too much. Otherwise, the synthesized zeolite membrane layer becomes heterogeneous or too thick. The seeded supports have been prepared by soaking the mullite supports in an 8% NaA zeolite suspension once for 1 min. The 8% NaA zeolite suspension has been prepared by mixing 8 g NaA zeolite in 92 ml distilled water. After soaking, the supports have been dried at 100 °C for 3 h in air.

NaA synthesis from chemical source

NaA membrane has been grown hydrothermally on the surface of the porous support. The hydrothermal synthesis of NaA zeolite membrane has been performed as follows:

The synthesis solution has been prepared by mixing aluminates and silicate solutions. 4.87 g of sodium hydroxide has been dissolved in 76 ml of distilled water. The solution has been divided into two equal volumes and kept in polypropylene bottles. Aluminates solution has been prepared by adding 6.23 g sodium aluminates (Aldrich, 50-

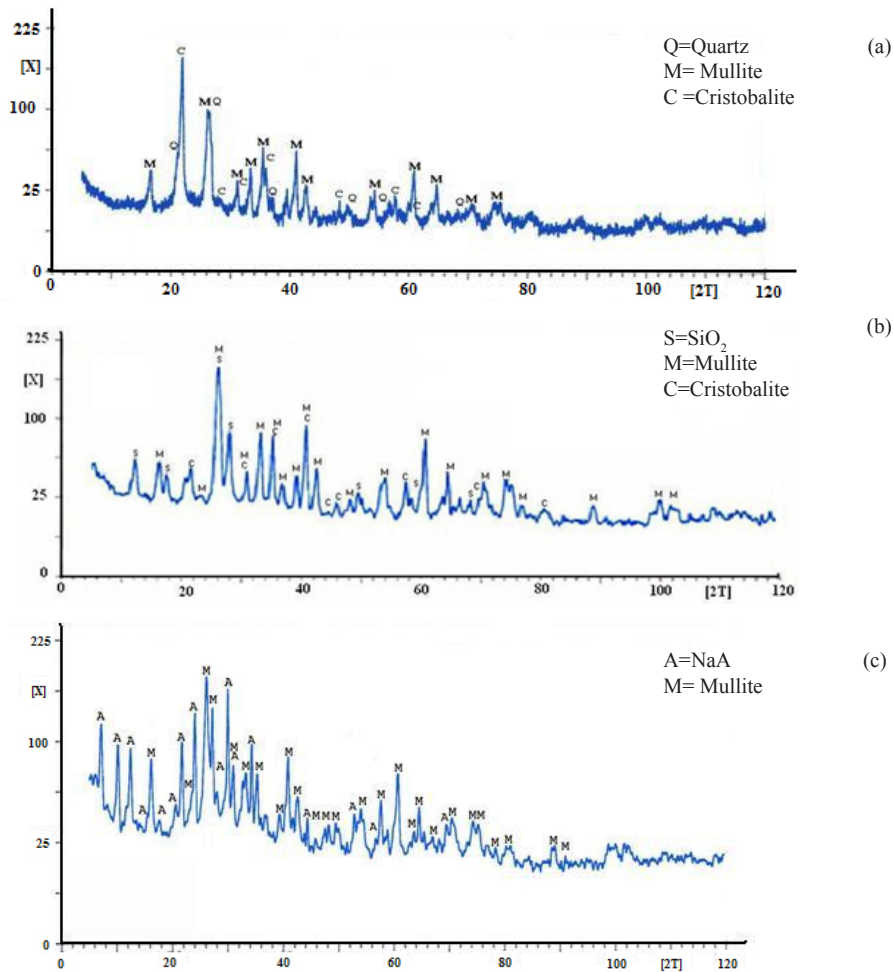


Fig. 4. XRD pattern of the membrane support a) before treatment b) after treatment c) seeded support after treatment

56% Al₂O₃) to one part of the NaOH solution. It has been well mixed until cleared. Silicate solution has been prepared by adding 16.57 g sodium silicate solution (Merck, 25-28% SiO₂) to another part of the NaOH solution. Silicate solution has then been poured into aluminates solution and well mixed until a thick homogenized gel has been formed. Composition of the homogeneous solution for zeolite NaA membrane is represented by the following molar ratio 1.926 SiO₂: Al₂O₃: 3.165 Na₂O: 128 H₂O [14-16].

Two ends of the support have been closed with rubber caps to avoid any precipitation of zeolite crystals on the internal surface of the support during membrane synthesis. The seeded support has been placed vertically in a Teflon autoclave. The solution has been carefully poured in the autoclave and then the autoclave has been

sealed. The crystallization has been carried out in an oven at a temperature of 100 °C for 3 h. Then, the sample has been taken and the synthesized membranes have been washed several times with distilled water. The pH of the washings solution must be 7. Then, the samples have been dried in air at room temperature for 12 h.

NaA synthesis from kaolin source

NaA membrane was grown hydrothermally on the surface of a porous tubular mullite support (14 mm outer diameter, 12 cm length) using by kaolin powder as a source for aluminates and silicate. The hydrothermal synthesis of NaA zeolite membrane was performed as follows. In the first step shown in Scheme 2, crystalline kaolin is converted to amorphous, but chemically reactive metakaolin by dehydroxylation process at high temperature

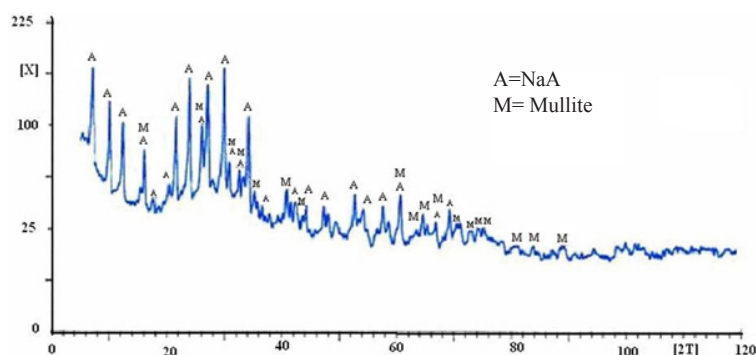


Fig. 5. XRD pattern of the zeolite NaA membrane with 2 times synthesis

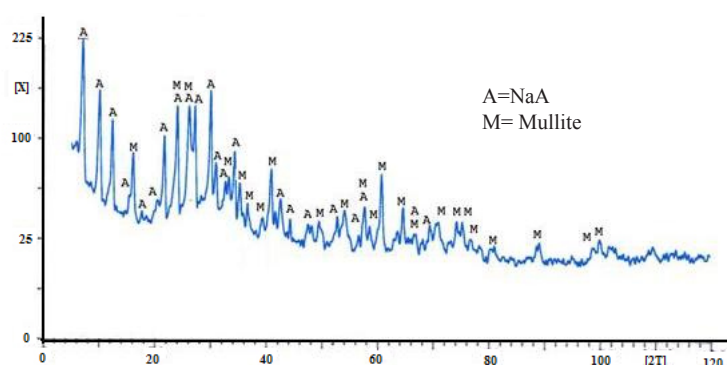


Fig. 6. XRD patterns the membrane from kaolin

under air. In the next two steps, hydrothermal synthesis of zeolite A from both raw and purified kaolin have been conducted. Step 2 in Scheme 2 consists of the gel formation parameters including NaOH concentration, temperature. In addition, time of aging. Finally, step 3 involves the hydrothermal synthesis. The final solids are washed and dried overnight before characterization.

Synthesis solution was prepared by mixing metakaolin and NaOH solutions. NaOH was dissolved in distilled water. The solution gel was prepared by adding metakaolin powder to NaOH solution. The resulting mixture was stirred vigorously, producing a homogeneous gel. The molar composition of the resulting gel was $\text{SiO}_2/\text{Al}_2\text{O}_3=1.926$, $\text{Na}_2\text{O}/\text{Al}_2\text{O}_3=3.165$ and $\text{H}_2\text{O}/\text{Al}_2\text{O}_3=128$.

Two ends of the supports were closed with rubber caps to avoid any precipitation of the zeolite crystals on internal surface of the supports during membrane synthesis. The seeded support was placed vertically in a Teflon autoclave. The solution was carefully poured in the autoclave and then the autoclave was sealed [17-19]. After hydrothermal treatment at 100°C for 3 h, the

sample was taken and the synthesized membrane was washed several times with distilled water. The sample was then dried at room temperature for 12 h in air.

Pervaporation tests

We used a PV experimental set up to be sure of successful fabrication Nano pore NaA zeolite membranes from chemical source and kaolin source. PV tests were carried out using a standard PV apparatus. The experiments have been carried out at a temperature of 30 °C and a pressure of 1.5 mbara at the permeate side, within a period of 30-60 min.

The pervaporation setup is presented in Fig. 3. Any change of feed concentration due to permeation is negligible because the amount of permeate is small (max 2 ml) compared to total feed volume in the system (0.5 lit). A three stage diaphragm vacuum pump (vacuubrand, GMBH, Germany) has been employed to evacuate the permeate side of the membrane to a pressure of approximately 1.5 mbara while the feed side has been kept at room pressure. The permeate side has been connected to a liquid nitrogen trap

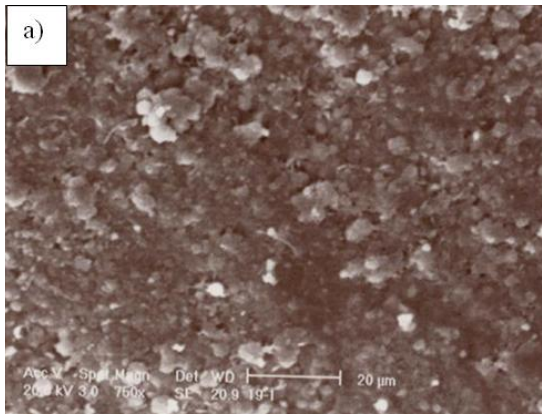


Fig. 7. SEM micrograph of the support

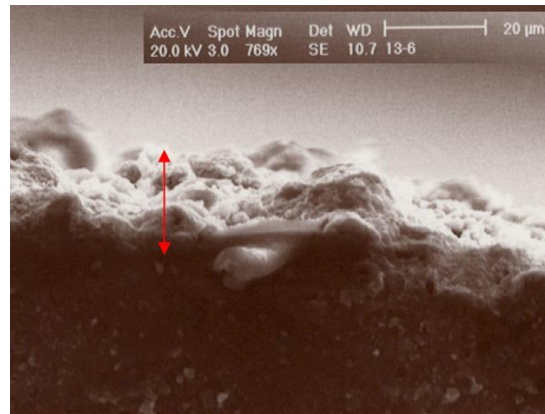


Fig. 9. SEM micrograph of zeolite NaA membrane cross section preparation of chemical source

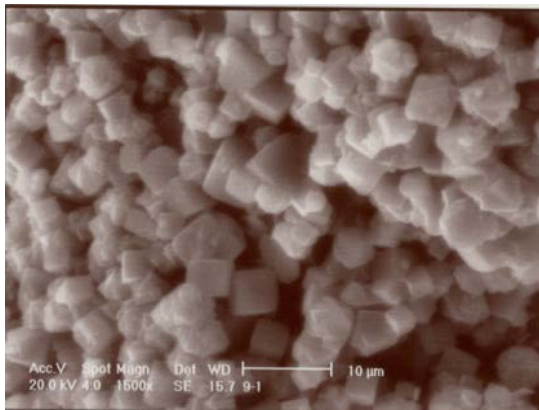


Fig. 8. SEM micrograph of the membrane surface

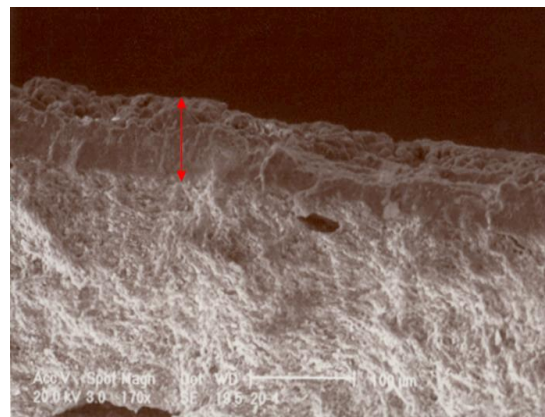


Fig. 10. SEM micrograph of zeolite NaA membrane cross section preparation of kaolin source

via a hose to condense the permeate (vapor). Permeate concentrations were measured using GC (TCD detector, Varian 3400, carrier gas: hydrogen, column: polyethylene glycol, sample size: 5 μm, column and detector temperatures: 120-150 °C, detector flow: 15 ml/min, carrier flow: 5 ml/min, column pressure: 1.6 kpa, GC input pressure: 20 kpa). Performance of PV is usually evaluated by total flux (kg/m²h) and separation factor (dimensionless). Separation factor of any organic aqueous solution can be calculated from the following equation:

$$\text{Separation factor } (\alpha) = \frac{\left[\frac{X_{H_2O}}{X_{Organic}} \right]_{\text{permeate}}}{\left[\frac{X_{H_2O}}{X_{Organic}} \right]_{\text{feed}}}$$

Where X_{H_2O} and $X_{organic}$ are weight fractions of water and organic compound, respectively.

RESULTS AND DISCUSSIONS

The NaA zeolite membranes were synthesized by chemical source and kaolin source. The mullite support was prepared from kaolin for zeolite membranes. The seeded supports have been prepared by soaking the mullite supports in a NaA zeolite suspension. The hydrothermally synthesis was used for preparation of zeolite membranes from chemical source. NaA membrane was grown hydrothermally on the surface of support using by kaolin powder as a source for aluminates and silicate. The synthesis of NaA zeolite from the kaolin source consists of two steps. At first, Thermal activation of the kaolinite in order to get metakaolinite. Then, Hydrothermal reaction of metakaolinite with aqueous NaOH medium.

The NaA membrane is highly selective for permeating water preferentially with the high permeation flux because of the micropore filling of water in the zeolite pores and/or the

Table 2. Flux and separation factor of the membranes

Example	Feed	Type of zeolite	Number of coating processes	Concentration of water (%)	Flux kg/m ² .h	Separation factor
1			2	50	1.05	> 10000
2			3	10	0.71	786
3		Chemical source	3	50	0.75	> 10000
4	UDMH		4	10	0.68	> 10000
5			4	5	0.56	884
6			5	5	0.45	> 10000
7		Kaolin source	1	10	0.375	> 10000

intercrystalline pores between zeolite crystals to afford water-selective permeation through the membrane. The performance of NaA zeolite membrane is the most favorable one among PV membranes that have been published so far and is very high enough to put these membranes into industrial applications. Phase identification was performed by XRD (Philips PW1710, Philips Co., Netherlands) with CuK α radiation. In addition, morphological studies were performed using SEM (JEM-1200 or JEM-5600LV equipped with an Oxford ISIS-300 X-ray disperse spectroscopy, EDS).

Fig. 4 (a, b, c) shows the XRD patterns of the membrane support before and after sodium hydroxide treatment, respectively. The XRD pattern shows that kaolin after calcinations at 1250 °C for 3 h is converted into mullite and free silica. Free silica can be observed in crystalline and amorphous form as shown in Fig. 4 a. In primary support (Fig. 4 a), the XRD pattern is very noisy because of the amorphous phase. After treatment by sodium hydroxide, the noisy base is completely omitted (Fig. 4 b) and intensity of mullite peaks increases. This shows that silica has been removed from the support. Removal of this free silica causes the support porosity to increase from 24.3% to 49%. By increasing the leaching time, all free silica has been removed as shown in the Fig. 4 c. Fig. 4c is XRD pattern of the seeded support after treatment. As seen, only mullite and zeolite (seed) can be observed.

The XRD patterns of NaA zeolite membranes (preparation by chemical source) confirm that crystal of zeolite NaA has been formed. Fig. 5 shows XRD of the membranes synthesized using the above-mentioned methods. In this figure, the only phases, which can be observed, are zeolite NaA and mullite. The results show that repeating zeolite NaA formation procedure on the same support by

the hydrothermal method improves membrane quality. Zeolite NaA membrane thickness increases with increasing the number of coating processes. However increasing preparation time of zeolite NaA membrane for more than 3 h causes other forms of zeolite such as sodalite and NaX to be formed. It must be mentioned that membrane flux decreases with increasing membrane thickness. In addition, significant changes in separation factor can be observed as shown in Table 2. Table 2 summarizes some details of the synthesis conditions and separation performance of the NaA zeolite membranes prepared in this work.

A promising result has been obtained after five times of coating as shown in Table 2.

Fig. 6 shows XRD pattern of formation NaA zeolite membrane and mullite support from kaolin clay. The XRD pattern of NaA zeolite membrane confirms that zeolite NaA crystals were formed from kaolin clay. Morphology of the support and the membrane made by kaolin was examined by Scanning Electron Microscopy. Fig. 7 shows SEM photographs of the mullite support surface.

Figs. 8, 9 and 10 show morphology of the zeolite membranes (surface and cross section). As seen, most of the crystals lie disorderly on the surface. The SEM photographs of the membranes (cross section) show that the mullite surface is completely covered by a zeolite crystal layer, whose thicknesses are larger than 20 μ m at chemical source method and 70 μ m at kaolin source method. Porous structure of the support and thin layer of the membranes can be easily observed. The size of the crystals was nonhomogeneous, with crystals size of about 3–5 μ m.

As shown in table 2, the comparison Pervaporation performance of NaA zeolite membrane formation of kaolin clay and NaA zeolite membranes made by chemical source confirm that the kaolin is a

cheap source for making NaA zeolite membranes. As shown, the zeolite membranes preparation by kaolin source exhibited a high selectivity towards water in water/ethanol mixtures. The permeate water flux reaches a value as high as 0.375 kg/m².h for an ethanol concentration of 10 wt. %. The membranes showed a water- ethanol ideal selectivity of 10000, indicating its reasonable quality.

CONCLUSION

Zeolites are usually synthesized from aqueous basic aluminosilicate precursor gels under hydrothermal conditions at elevated temperatures. They are preferably prepared from pure solutions of sodium silicate and sodium aluminates. However, their production from cheap raw natural materials is of economic importance and hence it is necessary to production of zeolites by economical ways. Zeolite NaA membrane was successfully produced from kaolin. We have demonstrated that a NaA zeolite membrane can be synthesized from kaolin on a porous mullite support by hydrothermal method. NaA zeolite membrane was used for dehydration of aqueous Ethanol mixtures. These membranes showed very good membrane performance for separation of Ethanol /water mixtures.

CONFLICT OF INTEREST

The authors declare that there are no conflicts of interest regarding the publication of this manuscript.

REFERENCES

1. A. Almutairi, L. Weatherley, Intensification of ammonia removal from waste water in biologically active zeolitic ion exchange columns, *Journal of Environmental Management* 160 (2015) 128–138.
2. H. Premakshi, K. Ramesh, M. Kariduraganavar, Modification of crosslinked chitosan membrane using NaY zeolite for pervaporation separation of water–isopropanol mixtures, *Chemical Engineering Research and Design* 94 (2015) 32–43.
3. Sorenson, S, E. Payzant, W. Gibbons, B. Soydas, H. Kita, R. Noble, J. Falconer, Influence of zeolite crystal expansion/contraction on NaA zeolite membrane Separations, *Journal of Membrane Science* 366 (2011) 413–420.
4. Chun-Feng Wang, Jian-Sheng Li, Lian-Jun Wang, Xiu-Yun Sun, Influence of NaOH concentrations on synthesis of pure-form zeolite A from fly ash using two-stage method, *Journal of Hazardous Materials* 155 (2008) 58–64.
5. Sathy Chandrasekhar, P.N. Pramada, Kaolin-based zeolite Y, a precursor for cordierite ceramics, *Applied Clay Science* 27 (2004) 187–198.
6. B. Zhu, D. Myat, G. Connor, Application of robust MFI-type zeolite membrane for desalination of saline wastewater, *Journal of Membrane Science* 475 (2015) 167-174.
7. S. Basu, S. Mukherjee, A. Kaushik, Integrated treatment of molasses distillery wastewater using microfiltration (MF), *Journal of Environmental Management* 158 (2015) 55–60.
8. Mahir Alkan, C. gilded Hopi, Zoo" Ryrie Wilma, Hail Go" leer, The effect of alkali concentration and solid/liquid ratio on the hydrothermal synthesis of zeolite NaA from natural kaolinite, *Microporous and Mesoporous Materials* 86 (2005) 176–184.
9. Fernando G. Colina, Joan Llorens, Study of the dissolution of dealuminated kaolin in sodium–potassium hydroxide during the gel formation step in zeolite X synthesis, *Microporous and Mesoporous Materials* xxx (2007) 157–166.
10. K. Speronello, Porous mullite, U.S. Patent NO 4628042, 1986.
11. K. Speronello, Porous mullite, U.S. Patent No. 4601997, 1986.
12. Sanaa Jamaly, Adewale Giwa, Shadi Wajih Hasan, Recent improvements in oily wastewater treatment: Progress, challenges, and future opportunities, *Journal of Environmental Sciences* 37 (2015) 15–37.
13. Sonia Aguado, Jorge Gascon, Jacobus C. Jansen, Freek Kapteijn, Continuous synthesis of NaA zeolite membranes, *Microporous and Mesoporous Materials* 120 (2009) 170–176.
14. A. Malekpour, M.R. Mililani, M. Kheirkhah, Synthesis and characterization of a NaA zeolite membrane and its applications for desalination of radioactive solutions, *Desalination* 225 (2008) 199–208.
15. L. Heller-Kallai, I. Lapidés, Reactions of kaolinites and metakaolinites with NaOH—comparison of different samples (Part 1), *Applied Clay Science* 35 (2007) 99–107.
16. I. Lapidés, L. Heller-Kallai, Reactions of metakaolinite with NaOH and colloidal silica — Comparison of different samples (part 2), *Applied Clay Science* 35 (2007) 94–98.
17. Sathy Chandrasekhar, P.N. Pramada, Microwave assisted synthesis of zeolite A from metakaolin, *Microporous and Mesoporous Materials* 108 (2008) 152–161.
18. L. Ayele, J. Pariente, Y. Chebude, Synthesis of zeolite A from Ethiopian kaolin, *Microporous and Mesoporous Materials* 215 (2015) 29-36.
19. A. Tironi, M. Trezza, E. Irassar, A. Scian, Thermal treatment of kaolin: effect on the pozzolanic activity, *Procedia Materials Science* 1 (2012) 343 – 350.